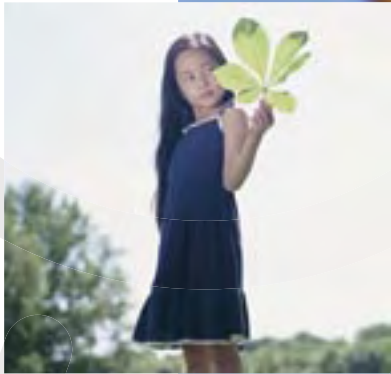


Sollatek Solar Products



harnessing the power of the sun

*Sollatek*<sup>™</sup>  
Solar Systems



## The heart of the system



**SOLAR MODULE** is a number of solar cells connected together and encapsulated to give a useful output. For larger systems, the modules can be connected in series and parallel to form a solar array.

**SOLAR BATTERY** stores the electricity from the solar module via the charge controller. This electricity can then be used at night or in periods of bad weather. Sealed and wet types are available.

**LOAD** covers any equipment which requires power to operate. Examples include lights, televisions, water pumps and radio transmitters.

A GLOBAL PLAYER IN PHOTOVOLTAIC PRODUCTS, Sollatek designs, manufactures and supports a wide variety of solar related products & systems. With over 20 years experience in the solar industry, Sollatek's products are used in thousands of systems around the world.

Sollatek's award winning Glowstar (solar lantern) & DC Lights products are always the preferred choice in specifying rural lighting & solar lighting home systems.

The Charge Controller is at the heart of every Solar system, and is required to monitor and control the power going into and coming out of the battery.

It must also manage the power generated by the solar panel to ensure it does not overcharge the battery.

The Charge Controller must also ensure that the connected loads don't over-discharge the battery, thereby damaging it.

**Charge Controllers** Sollatek Charge Controllers are state of the art microprocessor controlled and range from 6Amps 12 or 24V and up to hundreds of amps for professional solar generation systems.



**SUNPOWER 6**  
Ideal for small lighting systems, telemetry and small power generation systems



**SUNPOWER10**  
Small to medium applications, home lighting systems & remote telemetry



**SUNPOWER 30**  
Medium to large system, street lighting & commercial lighting (e.g. billboards)



**SCC**  
For professional large systems. Modular in design and suitable as part of hybrid power stations



**Batteries** Sollatek's range of solar batteries includes both wet and dry types. The LM is a wet, tubular range. The STG is sealed gel tubular. The SGM is Sealed AGM type and the SBG is sealed gel. Type LM is low maintenance. All other types are maintenance free.



LM



STG

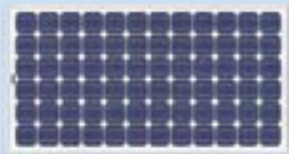


SGM



SBG

**Solar Modules** Durable, maintenance-free and lightweight units utilising high efficiency single or multi-crystal cells, from 5Wp up to 265Wp to suit most applications.



**Solar Lights** High efficiency fluorescent lights for indoor, outdoor and street lighting applications in 12V, 24V and 48V.



**LUMINA**  
High efficiency compact fluorescent Lamps (4 pin)



**ECOLITE**  
Linear fluorescent tube



**OUTLITE**  
High efficiency compact fluorescent lamp - 18W

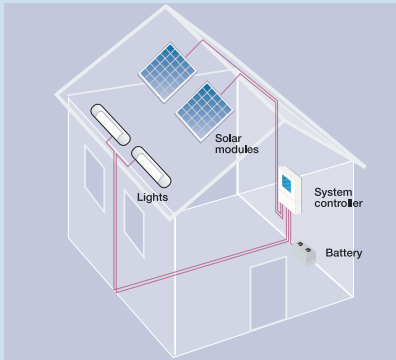


**STREET LIGHTING**  
IP65, weatherproof bulkhead (GRP)



**GLOWSTAR LANTERN**  
Portable solar powered lighting

**COMPLETE SOLAR SYSTEMS INSTALLATIONS** In remote locations, where the sun's energy is abundant, solar power generation can be the ideal solution as an alternative source of energy to power applications such as telecom stations (mobile & land systems), TV transmitters and whole village electrification. Sollatek provides expertise in consultation, design and implementation of such systems and furthermore manufactures and supplies the majority of the elements required for these installations.



Sollatek provides you with full back up support and a two year worldwide warranty on all products, with local support in over twenty countries worldwide.



**SOLLATEK (UK) LTD**  
 UNIT 10, POYLE 14 INDUSTRIAL ESTATE  
 NEWLANDS DRIVE, POYLE, SLOUGH  
 SL3 0DX. UNITED KINGDOM

**Tel:** International +44 1753 688300  
 National 01753 688300

**Fax:** International +44 1753 685306  
 National 01753 685306

**E-mail:** sales@sollatek.com

**Internet:** www.sollatek.com

All weights and dimensions are approximate. Specifications are subject to change without prior notice.

©Sollatek (UK) Limited 1996  
 All Rights Reserved.

SOLLATEK and the SOLLATEK device are the trade marks of the Sollatek group of companies.  
 Stock number: 00030710 Revision 1.0 May 06