

A/C GUARD

OVERLOAD, HIGH AND LOW VOLTAGE PROTECTION

Description

Appliances such as air-conditioning and refrigeration units are particularly vulnerable to damage caused by low voltage 'brownouts'. With the A/C Guard, your equipment is protected against all power fluctuations: over-voltage as well as low voltage, spikes, surges, power back surges and power fluctuations.

Part of Sollatek's highly versatile Voltshield Range which uses the Sollatek Switcher technology, the A/C Guard switches off the air-conditioner instantly when a power problem occurs, reconnecting it only once the mains supply has stabilised.

Function

The A/C Guard's Automatic Voltage Switcher functions protect against Low voltage, high voltage, power-back surges, power fluctuations and surges/ spikes. It features a start up delay of about 4 minutes to prevent frequent switching on and off during fluctuations.

The A/C Guard has a built-in microprocessor which adds the advanced feature TimeSave™ to save on down time. TimeSave™ means that when the mains returns to normal after any event, the A/C Guard checks the duration of the OFF time. If the unit has been off for more than 4 minutes then it will switch the air-conditioner on within 10 seconds rather than the standard 4 minutes. If however, the unit has been off for less than 4 minutes, the A/C Guard will ensure that it will remain off up to 4 minutes and then restarts automatically.

An integral circuit breaker enhances the protection offered by the A/C Guard. If a short circuit or over-load occurs, the circuit breaker detects the fault and the air conditioner is safely disconnected. To resume operation, simply switch the A/C Guard circuit breaker on again, assuming the cause of the overload has been removed. The air conditioner will restart automatically after an intelligent time delay.



A/C Guard (wall mounting)

Protection against:



High Voltage



Low Voltage

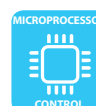


Spikes/Surges



8/20µs
Class III
Surge/Spikes

Features:



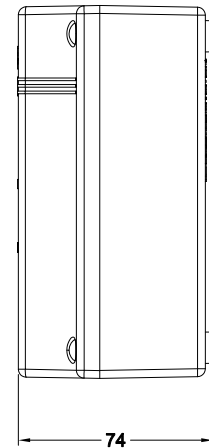
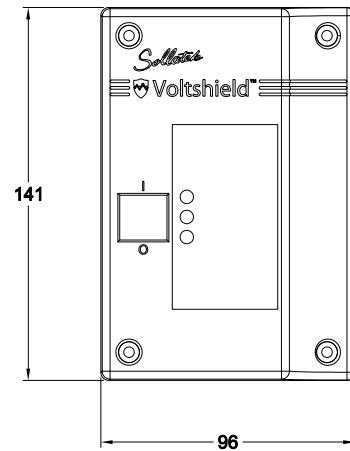
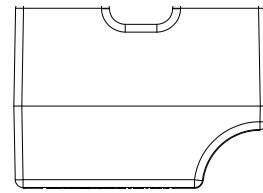
Protection for:



Specifications

Model	A/C Guard		
Nominal voltage	110V	230V	
Watts	3300	7200	
Frequency	50/60 Hz		
Load current (Amps)	16/20/25		
Inrush current (20ms)	110 Amps		
Max consumption (milli Amps)	<100mA		
Wait time	10s -10m plus manual		
Over-voltage disconnect	230V-300V plus off		
Over-voltage reconnect	2V below HVD setting		
Under-voltage disconnect	150 - 230V		
Under-voltage reconnect	5V above LVD setting		
Max supply	160V	320V	
Spike / surge protection	Joules Amps Response	80 6500A (8/20us) 10 nanosecs	160
Response time (over voltage)	<20 millisecc		
Response time (under voltage)	4 minutes		
Brown-out response time	20 millisecc		
Approx packed weight	400 g		
Dimensions packed (mm)	240 x 150 x 80		
Dimensions unpacked (mm)	140 x 98 x 78		
Shipping quantity per carton	36		
Socket type	direct wiring		

A/C Guard dimensions (mm)



TIMESAVE™ description



The Voltshield has a built-in microprocessor which adds the advanced feature TimeSave.™ TimeSave™ means that when the mains returns to normal, the Voltshield checks the duration of the OFF time. If the unit has been off for more than 3 minutes then it will reconnect the mains within 30 seconds rather than the standard 3 minutes.

This means the Sollatek Voltshield will give you more vital working time than any other switcher.

The VOLTSHIELD features

- Protects and prolongs the useful life of electrical appliances
- Eliminates the need to switch off appliances every time the electricity fails
- Safeguards valuable electrical appliances at all times
- Very low cost protection in relation to the value of appliances
- Different models available

ITEM	PRODUCT CODE
A/C GUARD 16A 115V	92621610
A/C GUARD 16A 220V	92621620
A/C GUARD 20A 115V	92622010
A/C GUARD 20A 220V	92622020
A/C GUARD 25A 115V	92622510
A/C GUARD 25A 220V	92622520

For more information on the Sollatek's Voltage Switcher Range refer to the **Voltshield** brochure or visit www.sollatek.com

Sollatek™

Sollatek (UK) Ltd.

Unit 10, Poyle 14, Newlands Drive, Poyle, Slough, SL3 0DX, UK

Tel: +44 (0)1753 688300 Fax: +44 (0)1753 685306

Technical support: support@sollatek.com

Sales: sales@sollatek.com www.sollatek.com