



Professional-grade maintenance-free  
batteries for the telecoms industry



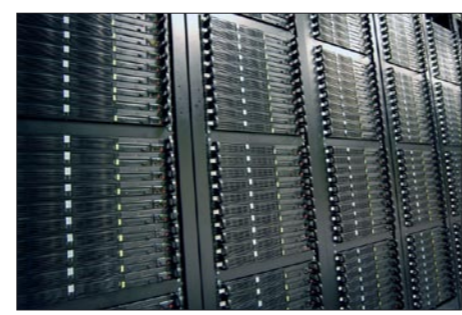
**THE STG RANGE OF BATTERIES FROM SOLLATEK** is the culmination of continuing research, manufacture and implementation of valve regulated lead acid stationary battery technology specifically to meet the demands of the modern telecoms industry.

Using state of the art technology (virtually no maintenance due to very low gas emissions) along with long life and excellent cycling capability, with the added advantage of conventional vented batteries with positive tubular plates, ensures the Sollatek range of STG batteries is the preferred choice in specifying.

Sollatek's Standby Battery manufacture conforms to ISO 9001 quality assurance. Highest quality of manufacture and a lifetime of 15 years is assured.

Sollatek's battery product range encompasses most applications and is always the preferred choice in specifying not only telecoms related applications but also rural lighting & solar lighting home systems.

Sollatek designs, manufactures and supports a wide variety of solar related products & systems. With over 20 years experience in the solar industry, Sollatek's products are used in thousands of systems around the world.



**Technical features:**

- **Tubular positive plates** incorporating a special grid construction, pressure cast from antimony-free alloy, with highly porous gauntlets that retain the active material
- **Pasted negative plates** designed to have service lives consistent with the positive plates
- **Electrolyte** immobilised in a gel structure
- **Separators** with extremely high porosity and low internal resistance
- **Containers and lids** made of plastic (ABS) material. Also available in ABS flame retardant material as an option (according to IEC 707 FVO)
- **Easy installation.** Sollatek STG cells are normally installed in an upright position on steel stands
- **One way relief valve** opens at low pressure and is fitted with a flame arrestor device
- **Terminals** female treated terminal (M10) ensure perfect contact and a low resistance with the flexible cable connectors
- **Post seals** high integrity post seal design to prevent electrolyte leakage and terminal corrosion
- **Connectors** flexible, fully insulated cable connectors screwed to the terminal with an insulated screw having a probe hole on the top for electrical measurement

**Features:**

- Safe
- Long life (15 years design life)
- Versatile
- Reliable
- Minimal gassing
- Extended cycle life

**Applications:**

- Remote microwave repeater stations
- Critical load solar systems
- Solar powered telecommunications systems
- GSM networks

**Electrical characteristics:**

- **Nominal voltage:** 2V
- **Float voltage charge at 20°C:** 2.23V/cell
- **Boost recharge:** maximum voltage of 2.4 V/cell with the maximum current of 0.25 x C<sub>10</sub> (A)
- **Self discharge at 20°C:** <2% a month

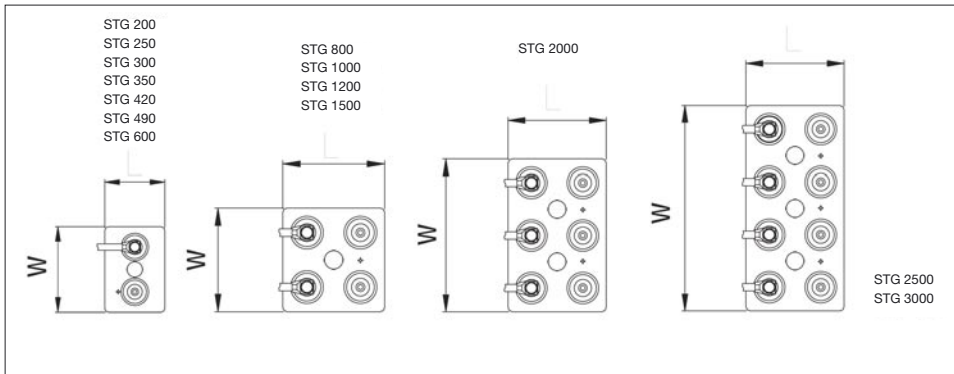
**Applicable standards:**

- DIN 40742
- IEC 60896 Part 21-22
- Eurobat Guide - 12 years and longer "long life"

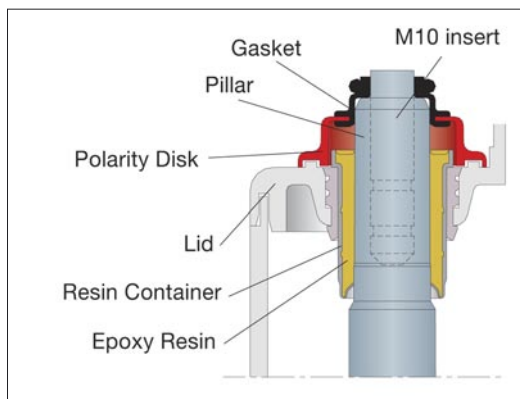


## Sollatek STG range Specifications

CELL TYPE	NORME DIN 40742			CAPACITY AT 20°C (Ah)			DIMENSIONS mm			WEIGHT Kg
	Designation	Nominal Capacity (Ah)		5hrs to 1.77 VPC	3hrs to 1.75 VPC	1hr to 1.67 VPC	Length	Width	Height	
		C10	C100							
STG 200	4 OPzV 200	200	260	172	150	106	103	206	398	18
STG 250	5 OPzV 250	250	325	215	188	133	124	206	398	22
STG 300	6 OPzV 300	300	390	258	225	159	145	206	398	26
STG 350	5 OPzV 350	350	455	300	263	185	124	206	514	29
STG 420	6 OPzV 420	420	546	360	315	222	145	206	514	34
STG 490	7 OPzV 490	490	637	420	368	259	166	206	514	39
STG 600	6 OPzV 600	600	780	516	450	312	145	206	689	48
STG 800	8 OPzV 800	800	1040	688	600	416	210	191	689	66
STG 1000	10 OPzV 1000	1000	1300	860	750	520	210	233	689	80
STG 1200	12 OPzV 1200	1200	1560	1032	900	624	210	275	689	95
STG 1500	12 OPzV 1500	1500	1950	1260	1116	744	210	275	840	121
STG 2000	16 OPzV 2000	2000	2600	1680	1488	992	214	399	816	163
STG 2500	20 OPzV 2500	2500	3250	2100	1860	1240	214	497	816	208
STG 3000	24 OPzV 3000	3000	3900	2520	2232	1488	214	576	816	243



### High reliability post seal



*Sollatek*  
solar systems

**SOLLATEK (UK) LTD**  
UNIT 10, POYLE 14 INDUSTRIAL ESTATE  
NEWLANDS DRIVE, POYLE, SLOUGH  
SL3 0DX. UNITED KINGDOM

**Tel:** International +44 1753 688300

**Fax:** International +44 1753 685306

**E-mail:** sales@sollatek.com

**Internet:** www.sollatek.com