



*ADVANCED TEMPERATURE CONTROLLERS,
ENERGY MANAGEMENT DEVICES,
AND CONNECTIVITY SOLUTIONS*



COMPANY PROFILE



Established for over 35 years in the United Kingdom, Sollatek is a manufacturer of innovative products in temperature control, connectivity solutions, energy saving and power control. With its head office in the United Kingdom, this is where our engineering, production, sales, marketing and logistics teams are located.



Sollatek has a global reach with a local presence in 50 countries including manufacturing facilities in Thailand, Egypt, China and the UK. We have dedicated OEM offices across 5 continents and ship products to over 120 countries around the world.



Sollatek's refrigeration range offers innovative electronic temperature controllers, energy saving devices, LED displays and stabilising and voltage protection measures for commercial fridges, freezers, coolers, drink dispensers, chiller cabinets and refrigerated displays. All Sollatek products are hydrocarbon compliant.



Connectivity provides a huge opportunity to improve efficiency, maximise sales, remotely monitor cooler health, track and locate assets. Sollatek provides a comprehensive range of connectivity solutions including 2G, 3G, LTE, BLE, Wi-Fi and GPS capabilities. Sollatek are in the process of developing advanced products which include emerging technology modules such as LoRa, NB-IoT and SigFox.



JEA

ADVANCED INTEGRATED CONTROLLER & DISPLAY WITH CONNECTIVITY OPTIONS

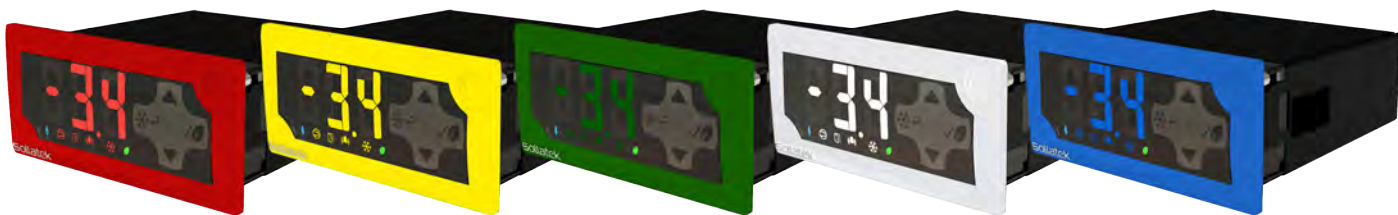
An advanced refrigeration control system with an integrated LED display for all merchandising coolers.

Internal and external connectivity options for today's and tomorrow's emerging technology.

- Up to 4 outputs
- Up to 5 inputs including door switch and presence sensor
- 90 V - 300 V universal voltage
- AC and DC switching certified relays for lights and fans
- Separate isolated outputs for optional DC lights and fan
- Advanced learning capability
- Sophisticated menu configuration
- Capacitive touch switches
- Hydrocarbon refrigerants compatible
- IP65 front
- Customisable bezel (different colours and options of custom logo)
- High visibility LED display (different LED colours available)
- Fits standard panel apertures so can be easily installed in existing or new coolers
- Front mountable without the need to access the rear panel

Options

- Available with red/yellow/green/white/blue LED display & customisable coloured bezel
- Internal Bluetooth and battery for data collection and customer engagement
- Supports Sollatek FFX-B expander port with GSM always-on communication, Wi-Fi and GPS location technologies and battery modules as well as tomorrow's connectivity solutions including LoRa, LTE-M, NB-IoT and Sigfox
- External GSM modules (2G/3G/4G/LTE-M) with built in BLE for always on connectivity
- External GSM modules (2G/3G/4G/LTE-M) with built in Wi-Fi for precise asset tracking
- External digital display (FDM3)



NEW



FFA



ULTRA ADVANCED TEMPERATURE CONTROLLER WITH UNIQUE EXPANDABILITY

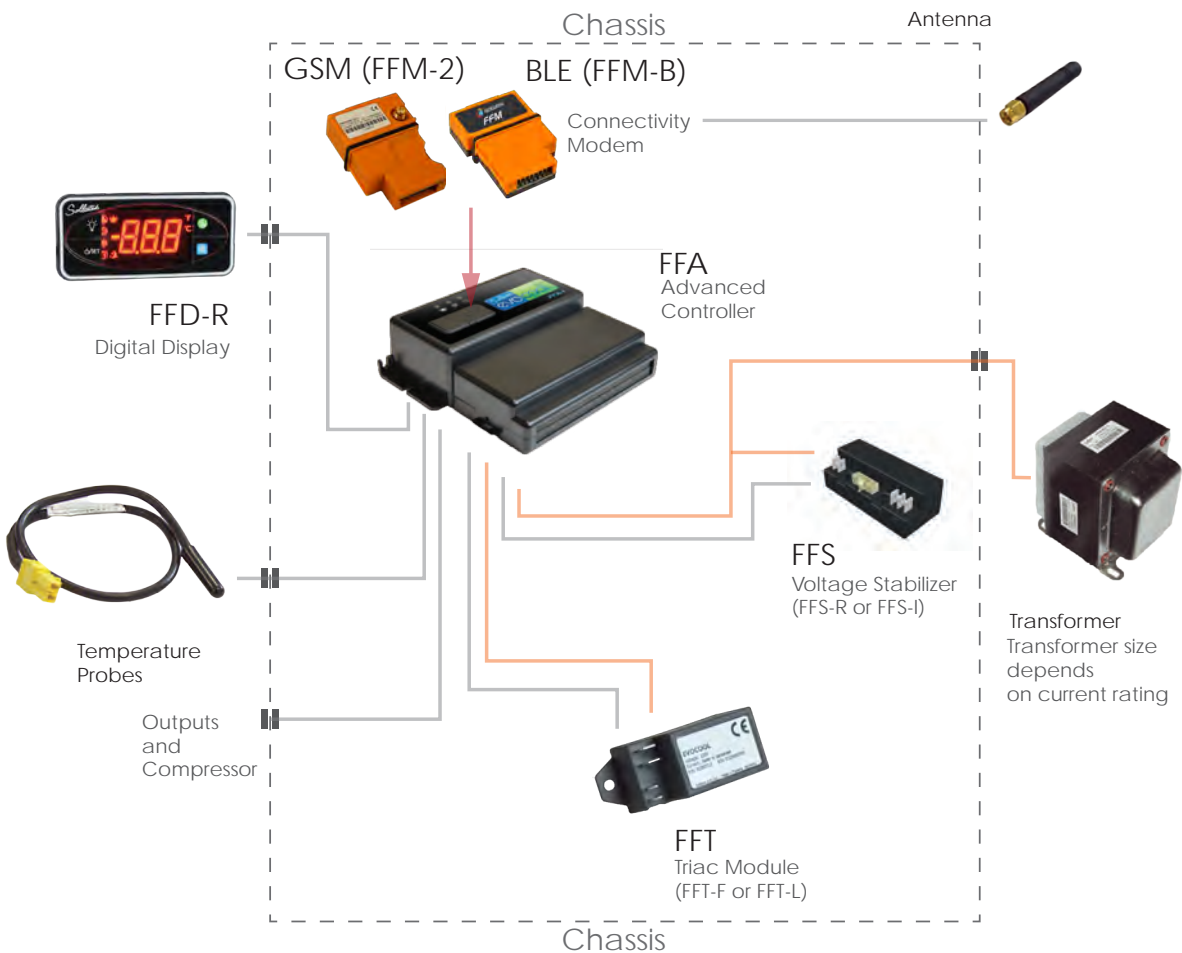
The most advanced refrigeration control system currently available for merchandising coolers.

Unique expandability adding display, comprehensive connectivity, voltage stabilisation, energy saving and long life compressor switching.

- Up to 5 outputs
- Up to 5 inputs including door switch and presence sensor
- Wide input voltage range
- AC and DC switching certified relays for lights and fans
- Separate isolated outputs for optional DC lights and fan
- Total EMD functionality
- Hydrocarbon refrigerants compatible
- SELV isolated circuits

Options

- Digital display with comprehensive menu accessible via integral buttons (FFD, FDM3)
- Plug-in BLE module with or without battery (FFM-B/BB)
- Plug-in GSM modules (2G/3G/4G/LTE-M) with battery for always-on connectivity. Also with or without BLE for proximity communications and contactless asset identification and customer engagement (FFM-2, FFM-xBB)
- External GPS and/or Wi-Fi module for enhanced asset tracking (GGR, GWR, GCR)
- Plug-in voltage stabiliser (FFS) for areas with poor electricity supply
- Plug-in Solid State switch module (FFT) for long life compressor switching.



FCAx3

ADVANCED TEMPERATURE CONTROLLER

- Up to 3 outputs
- Up to 3 inputs including door switch
- Total EMD functionality
- Energy saving (fan control/temperature setback)
- Direct retrofit for electro-mechanical thermostats
- Hydrocarbon refrigerants compatible
- Bluetooth connectivity ready
- User-adjustable temperature dial
- Parameters fully programmable via SPP device and software
- 75 V -300 V universal voltage range
- Zero voltage switch (ZVX) for long relay switching life
- TIMESAVE™ intelligent time delay
- Complete voltage protection (high, low, spike & surge)
- Encapsulated for splash and environmental protection
- Three LED status indicators

Options

- Internal Bluetooth BLE
- External Bluetooth BLE module (GBR)
- Digital LED display with buttons to access comprehensive menu (FFD, FDM3)

FCZ

ULTRA LOW COST TEMPERATURE CONTROLLER

- Up to 2 inputs including door switch
- Small physical size
- Direct retrofit for electro-mechanical thermostats
- Hydrocarbon refrigerants compatible
- User-adjustable temperature dial
- Parameters fully programmable via SPP device and software
- Voltage protection (high & low)
- Encapsulated for splash and environmental protection

Options

- 230 V or 115 V models
- External Bluetooth BLE module (GBR)



FTB

ENERGY MANAGEMENT TEMPERATURE CONTROLLER

- Up to 4 outputs
- Up to 4 inputs including door switch and presence sensor
- Total EMD functionality
- Energy saving (fan control/temperature setback)
- Hydrocarbon refrigerants compatible
- Bluetooth connectivity ready
- Parameters fully programmable via SPP device and software
- 75 V to 300 V universal voltage range
- Complete voltage protection (high, low, spike & surge)
- Encapsulated for splash and environmental protection

Options

- Internal Bluetooth BLE
- External Bluetooth BLE module (GBR)
- Digital LED display (FDM4/4S or FDM5/5S) with buttons to access comprehensive menu



FCR

ELECTRONIC TEMPERATURE CONTROLLER

- Up to 3 outputs
- Up to 2 inputs including door switch
- Small physical size
- Energy saving (fan control)
- Direct retrofit for electro-mechanical thermostats
- Hydrocarbon refrigerants compatible
- User-adjustable temperature dial
- Parameters fully programmable via SPP device and software
- TIMESAVE™ intelligent time delay
- Complete voltage protection (high, low, spike & surge)
- Encapsulated for splash and environmental protection

Options

- 230 V or 115 V models
- External Bluetooth BLE module (GBR)



FFD

DIGITAL LED DISPLAY

- 14 mm height display characters
- 3 X 7 segment digits
- 2 Decimal points, “-” sign and 8 status icons
- Four control buttons
- Adjust a wide range of controller parameters
- Low profile and fits standard display panel apertures
- IP65 front for washdown resistance
- Connects to Evocool system and FCAx3

Options

- Available in red/yellow/green/white/blue LEDs



FDM4

DIGITAL LED DISPLAY

- 30 mm height display characters
- 2 X 7 segment digits
- Decimal point, “-” sign and compressor run mode LED
- One push button on the rear of the unit
- Adjust six saved controller parameters plus mode changes
- Low profile and fits standard display panel apertures
- IP65 front for washdown resistance
- Connects to FTB

Options

- Available in red/yellow/green/white/blue LEDs



FDM5

DIGITAL LED DISPLAY

- 50 mm height display characters
- 2 X 7 segment digits
- Decimal point, “-” sign and 8 status icons
- One push button on the rear of the unit
- Adjust six saved controller parameters plus mode changes
- Low profile
- IP65 front for washdown resistance
- Connects to FTB

Options

- Available in red/yellow/green/white/blue LEDs



FDM3

DIGITAL LED DISPLAY

- 14 mm height display characters
- 3 X 7 segment digits
- 2 Decimal points, “-” sign and 8 status icons
- Four control buttons
- Adjust a wide range of controller parameters
- Low profile and fits standard display panel apertures
- IP65 front for washdown resistance
- Connects to Evocool system and FCAx3

Options

- Available in red/yellow/green/white/blue LEDs



FDM4-S

DIGITAL LED DISPLAY

- 30 mm height display characters
- 2 X 7 segment digits
- Decimal point, “-” sign and 4 status icons
- Four capacitive touch buttons on the right of the display
- Adjust six saved controller parameters plus mode changes
- Low profile and fits standard display panel apertures
- IP65 front for washdown resistance
- Connects to FTB

Options

- Available in red/yellow/green/white/blue LEDs



FDM5-S

DIGITAL LED DISPLAY

- 50 mm height display characters
- 2 X 7 segment digits
- Decimal point, “-” sign and 8 status icons
- Four capacitive touch buttons
- Adjust six saved controller parameters plus mode changes
- Low profile
- IP65 front for washdown resistance
- Connects to FTB

Options

- Available in red/yellow/green/white/blue LEDs



The ability to connect machines to the Internet provides businesses with a huge opportunity to improve efficiency, reduce costs and maximise sales.

Sollatek has a range of GSM and Bluetooth devices that help businesses to monitor their assets and obtain detailed data which can be viewed on an online portal provided by our industry-leading partners.

GPS and Wi-Fi module options create an extremely accurate asset tracking solution allowing businesses to secure their asset estate.



GMCO

REMOTE MONITORING AND ASSET TRACKING DEVICE



- Sales, technical & asset tracking tool
- Standalone device or connected to a controller
- Up to 6 input sensors (e.g. temperature, light, door sensors and presence sensor)
- Up to 3 external modules (Wi-Fi, GPS)
- Uploads telemetry and performance data to the online portal (GSM) or phone app (BLE)
- Transmits iBeacon and Eddystone beacons for nearby customer engagement (if BLE fitted)
- Rechargeable internal battery
- Environmentally protected

Options

- 2G/3G/4G/LTE-M options
- Internal Bluetooth BLE
- Asset tracking device (GGR, GWR, GCR)
- Connection to external equipment via UART or RS485 interfaces

FFX-B

ADVANCED COMMUNICATION EXTENDER PORT



- Modules can be added in the field without the need for a qualified technician
- Provides always-on and proximity solutions
- Accommodates up to 4 plug-in modules
- Internal Bluetooth BLE
- GSM, battery and location modules available
- Accommodates emerging technologies such as LTE-M, LoRa, NB-IoT and Sigfox
- Uploads telemetry and performance data from the controller to the phone app or online portal (if GSM module plugged in)
- Transmits iBeacon and Eddystone beacons for nearby customer engagement
- IP65 front for washdown resistance
- Connects to JEA & Evocool system

Options

- Compatibility options for third party controllers
- Internal battery

Plug-in modules

- GSM Double modules (2G,3G,LTE)
- Battery single and double modules
- Location single modules (GNSS/GPS, Wi-Fi)



FFM-B

BLUETOOTH PLUG-IN MODULE



- Uploads telemetry and performance data from the controller to the phone app
- Transmits iBeacon and Eddystone beacons for nearby customer engagement and asset identification
- BLE connectivity module
- Two LED status indicators
- Plugs into Evocool system

Options

- Internal battery (FFM-BB)

FFM-xBB

COMBINED GSM & BLUETOOTH PLUG-IN MODULE



- GSM and Bluetooth connectivity
- Uploads telemetry and performance data from the controller to the phone app and online portal
- Transmits iBeacon and Eddystone beacons for nearby customer engagement
- Contactless asset identification through proximity
- Internal battery
- Two LED status indicators
- Plugs into Evocool system

Options

- 2G/3G/LTE

GCR

COMBINED GPS & WI-FI TRACKING MODULE



- Multi-GNSS (GPS, GLONASS & Galileo) & Wi-Fi sensing module
- Highly sensitive for accurate location in rural and urban areas
- Connects to Evocool system with GSM module and GMCO

FFM-2

GSM PLUG-IN MODULE



- 2G GSM connectivity
- Uploads telemetry and performance data from the controller to the portal
- Internal battery
- Two LED status indicators
- Plugs into Evocool system

GBR

REMOTE BLUETOOTH DEVICE



- Uploads telemetry and performance data from the controller to the phone app
- Transmits iBeacon and Eddystone beacons for nearby customer engagement and asset identification
- Contactless asset identification through proximity
- Connects to Evocool system, FTB, FCA, FCR & FCZ
- Two LED status indicators

Options

- Internal battery (GBR-B)

GWR

WI-FI TRACKING MODULE



- Wi-Fi sensing module - does not connect to Wi-Fi
- Very accurate in urban and indoor locations
- LED status indicator
- Connects to Evocool system with GSM module and GMCO

GGR

GPS TRACKING MODULE



- Multi-GNSS (GPS, GLONASS & Galileo)
- Highly sensitive for accuracy even in remote rural locations
- LED status indicator
- Connects to Evocool system with GSM module and GMCO

FSPx RANGE

VOLTAGE STABILISATION AND PROTECTION FOR ALL REFRIGERATION AND OEM APPLICATIONS

- Wide input range depending on model - 5 models available
- Complete voltage protection (high, low, spike & surge protection)
- Hydrocarbon refrigerants compatible
- Frequency compensated and noise-free measurements
- Zero voltage crossing technology (ZVX) for long relay life
- TIMESAVE™ intelligent delay to reduce off-time when power has been off for more than 3 minutes
- Two discrete components: electronic control module and a power transformer
- Controller fully encapsulated and transformer shrouded for harsh environments
- Single plug for easy transformer connection
- Three LED status indicators

Options

- 5 Models: FSPE, FSPF, FSP, FSPM, FSPL
- 115 VAC or 230 VAC nominal voltage version
- Current can be matched to your requirement

Model Capability Comparison

	FSPE	FSPF	FSP	FSPM	FSPL
LVD	✓	✓	✓	✓	✓
Extra large Boost	✓	✗	✗	✗	✗
Large Boost	✓	✓	✓	✗	✗
Normal Boost	✓	✓	✓	✓	✓
1:1	✓	✓	✓	✓	✓
Buck	✓	✓	✓	✓	✗
HVD	✓	✓	✓	✓	✓



FCC

LOW VOLTAGE REGULATED POWER SUPPLY FOR ALL REFRIGERATION ACCESSORIES

- Regulated AC power supply for a wide input range, 75 VAC to 280 VAC
- Regulated output voltage suitable for powering glass door heaters
- Optional soft-start feature for start-up current limitation
- Complete voltage protection (high, low, spike & surge protection)
- Water splash proof for rugged application
- Light weight compared with a transformer

Options

- 3 Amp, 5 Amp or 10 Amp models

FREOGUARD

VOLTAGE PROTECTION FOR ALL FRIDGES, FREEZERS, AND COOLERS

- Complete voltage protection (high, low, spike & surge protection)
- TIMESAVE™ intelligent delay to reduce off-time when power has been off for more than 3 minutes
- Water splash proof for rugged application
- Suitable for air conditioners up to 30 A or 240,000 BTU

Options

- 16 Amp or 30 Amp models
- 115 VAC or 230 VAC nominal voltage version



SPP

SOLLATEK PROGRAMMING DEVICE

- Programming device for Sollatek refrigeration controls and displays
- Product configuration and parameters are selected via a computer program and downloaded to the SPP via USB connection
- Internal battery for programming in-situ ideal for production and in the field
- Capable of 1000+ programming events on a single charge
- One button programming

SPP Model Compatibility

	SPP01A	SPP02	SPP03
Programmable Device	SMC	FCAx3	JEA
	FCAx2	FCR	FFA
		FCZ	GMCO
		FTB	
		FFD	
		FDM3	
		FDM4 / 4S	
		FDM5 / 5S	
		FSPx Range	
		AVS	
		GMT	



EASYFIT

BLUETOOTH DEVICE FOR CONTACTLESS TRACKING

- Monitor cooler health, maintenance management and asset tracking
- Monitors, saves and uploads cooler temperature, light, door open/close, and movement data
- Internal sensors
- Internal battery
- Uploads data to the phone app via Bluetooth
- Transmits iBeacon and Eddystone beacons for nearby customer engagement
- Contactless asset identification through proximity
- No wires. Good for retrofit applications
- Mountable inside the cooler with a super-sticky pad

Options

- Magnet module for door sensing
- Optional screw mount fixing base



TEMPERATURE PROBES

NTC TEMPERATURE PROBES

- Sensitive thermistor element for accurate measurement
- Robust, sealed, double insulated construction

Options

- 10K, 100K moulded NTC options
- Different lengths and diameters available
- Different connector types for fitting to Sollatek controllers



FMP1

SOLLATEK PASSIVE INFRA-RED (PIR) MOTION DETECTOR

- Detect activity around the cooler
- Wide field of view and detection range of approx. 2 m
- Data uploaded to online portal for sales analysis
- Connects to GSM or BLE enabled Sollatek device
- Small in size and discreetly mounts onto the front grill
- Connects to Evocool system with GSM or BLE, JEA with GSM or BLE, GMCO and FTB with internal BLE



FMN485

COMMUNICATION SIGNAL CONVERTER

- Provides RS-485 interface for controllers
- Converts RS-485 signal to 3.3 V TTL signal
- Allows communication with external devices
- 4 off screw terminal for RS485 connection
- Two LED status indicators
- Connects to GMCO



Sollatek's **expertise** extends **worldwide** through **local networks**



Global and Local

With a customer base across the world, a local presence in more than 50 countries and dedicated OEM offices in 5 continents, Sollatek is able to provide support services wherever you are.



SOLLATEK UK LTD.

Tel: +44 (1753) 214 500

sales@sollatek.com

www.sollatek.com

Sollatek (UK) Ltd.

Sollatek House, Waterside Drive, Langley, Slough SL3 6EZ, UK

ISO9001: 2015 accredited company

All weights and dimensions are approximate. Specifications are subject to change without prior notice. ©Sollatek (UK) Limited 2018. All Rights Reserved. SOLLATEK and the SOLLATEK device are the trade marks of the Sollatek group of companies.

RGB

25/09/2018