



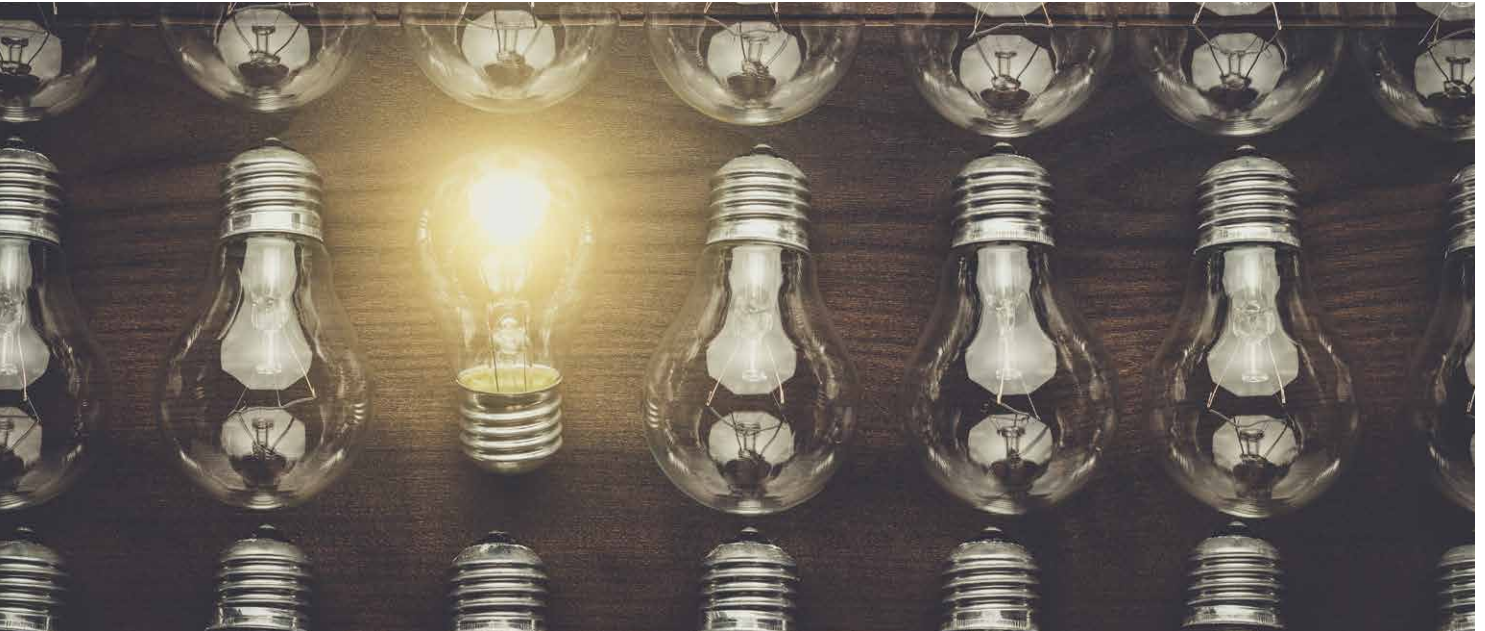
## THE SOLLATEK POWERBACK RANGE

High level quality power to fully protect mission-critical devices



# PRODUCT OVERVIEW

## POWERBACK SERIES



Power is critical in almost everything we do today, but when it isn't reliable or available, equipment and operations are at constant risk. The PowerBack range supports and protects critical appliances and equipment when mains AC is erratic and provides a powerful backup solution during outages.

The PowerBack inverters are available in a range of sizes from 850 VA to 5000 VA, they are easy to install, configure and manage, so whether it's mission-critical servers, home/office equipment, or necessary utilities such as lights, the PowerBack is the ideal power solution.

### MAIN FEATURES AND BENEFITS

- Highly efficient back up when critically needed
- Overload, short circuit and high temperature protection
- Fast transfer time (depending on model, see table below)
- Auto restart while AC mains is recovering
- Cold start function

### SUITABLE FOR

- Home appliances
- Office equipment
- Essential utilities such as lighting
- Servers and telecom applications
- Generators (connects to the output)
- Medical equipment
- Bank ATMs

# POWERBACK LINEAR INVERTER RANGE PB850L AND PB1500L

The PowerBack Linear (L) range is a robust inverter designed to provide pure and stable power to your home, small office appliances and precious electronics in areas with unreliable mains power.

They can accept wide input voltage and have different operational modes for you to adjust the output voltage range depending on your equipment/appliance requirement which makes the PowerBack L range an ideal backup emergency system for equipment that needs continued power even during a power outage.

## MAIN FEATURES AND BENEFITS

- 850 VA or 1500 VA (depending on model)
- Simulated sine wave inverter
- Selectable charging current: 10 A / 20 A
- Selectable output voltage range for different loads
- Auto restart while AC is recovering

## SUITABLE FOR

- Computers and printers
- Home entertainment equipment
- Lighting
- Small server rooms
- Commercial equipment such as cash registers & EPOS





# POWERBACK PB3000S AND PB5000S



The PowerBack S range is designed for high-performance critical applications in remote areas where mains power can be very erratic and very limited, or for off-grid applications.

The PowerBack S range combines a pure sine wave inverter, solar controller, and a battery charger in one compact enclosure to ensure your equipment never goes without power. The built-in MPPT maximises the solar power input, reducing the dependency on the grid to ensure the batteries are always charged and ready for any outages.

## MAIN FEATURES AND BENEFITS

- Up to 5000 VA (depending on model)
- Pure sine wave inverter
- Selectable charging current

- Dual input (mains and solar)
- Solar charging input up to 3750 Wp (depending on model)
- Three step intelligent charging
- Comprehensive LCD display

## ADDITIONAL FEATURES AND BENEFITS

- Fully configurable to give priority to solar and /or mains charging
- Overload, short circuit and high temperature protection
- Intelligent fan cooling (determined by the load)
- Power saving mode
- Compact Size

## SUITABLE FOR

- Home/office equipment including computers
- Commercial equipment such as cash registers & EPOS
- Banking ATMs
- Server rooms

# MAXIMA 3K-WL

The Maxima 3k-WL is designed for the most critical applications and sensitive loads such as bank ATMs, medical equipment, and server centres, where stable and reliable power is essential but rarely guaranteed in the most demanding locations.

The Maxima 3k-WL combines a powerful 40 Amp charger and the latest double conversion online no-break technology to deliver clean constant power to your equipment, a seamless switch over between power sources and to provide a long runtime during extended outages.

## MAIN FEATURES AND BENEFITS

- 3k VA online inverter
- Charger current: 40 A
- Operates in voltage range of 110-300 V
- Designed for 48 V systems

- Solid state technology
- Pure sine wave output
- LCD display
- Wall mount enclosure
- SNMP (Simple Network Management Protocol) for performance monitoring

## ADDITIONAL FEATURES AND BENEFITS INCLUDE

- Class II surge & spike protection
- Over voltage protection (400 V continuous)
- Air cooling using temperature-controlled fans
- Fully protected with input and output circuit breakers
- User friendly and safe dual compartment – wiring terminals separated from main power electronics

## SUITABLE FOR

- Domestic electrical appliances
- Office electronic equipment
- Server centres and telecom applications
- Bank ATMs
- Medical applications



# TECHNICAL SPECIFICATION

| MODEL   | PB850L   | PB1500L                               |
|---|--|---------------------------------------|
| Capacity  | 850 VA / 600 W                                     | 1500 VA / 1050 W                      |
| Technology  | Linear   |                                       |
| Switching Method  |  |                                       |
| <b>INPUT</b>  |  |                                       |
| Input Voltage Waveform                                  |  |                                       |
| Nominal Input Voltage                                   |  |                                       |
| Input Voltage Range                                     | 100 – 300 VAC (For home appliances)                | 180 – 260 VAC (For personal computer) |
| Nominal Input Frequency                                 |  |                                       |
| <b>OUTPUT</b>   |  |                                       |
| Wave from (Inverter Mode)                               | Simulated Sine Wave                                |                                       |
| Voltage Regulation (Inverter Mode)                      |  |                                       |
| Output Frequency  |  |                                       |
| Efficiency (Peak)                                       | 90 %   |                                       |
| Capable Of Starting Electric Motor                      | -  | -                                     |
| Protection  | Overload, short circuit                            |                                       |
| Transfer Time (AC to DC)                                | 20 ms typical                                      |                                       |
| <b>BATTERY</b>  |  |                                       |
| Battery Voltage   | 12 VDC   | 24 VDC                                |
| Battery Capacity (suggestion)                           | ≥100 Ah  |                                       |
| <b>AC CHARGER</b>                                       |  |                                       |
| Charger Current   | 10 A / 20 A selectable                             |                                       |
| Floating Charger Voltage (Bat. Type)                    | 13.7 VDC ±2 %                                      | 27.4 VDC ±2 %                         |
| <b>SOLAR CHARGER MODULE</b>                             |  |                                       |
| Max. PV Module Charger Current                          | x  | x                                     |
| Max PV Panel Array Power (Base on 250 W / 8 A PV panel) | x  | x                                     |
| Max PV Mode Power Rating To Support Load                | x  | x                                     |
| MAX. PV Input Current                                   | x  | x                                     |
| System DC Voltage                                       | x  | x                                     |
| MPPT Operating Voltage Range                            | x  | x                                     |
| MPPT Optimal Work Voltage Range                         | x  | x                                     |
| Max. PV Array Open Circuit Voltage                      | x  | x                                     |
| <b>INTERFACE</b>  |  |                                       |
| User Interface  | LED Indication / Audible Fault Alarm               |                                       |
| Alarm Types   | Overload, battery low                              |                                       |
| <b>PHYSICAL</b>   |  |                                       |
| Mounting  | Desktop  |                                       |
| Dimension(D*W*H)mm                                      | 289 x 290 x 127 mm                                 |                                       |
| Net weight  | 7 kg   | 10 kg                                 |
| <b>ENVIROMENTAL</b>                                     |  |                                       |
| Operating Environment                                   | 0 – 40 °C; 90 % Relative Humidity (Non-condensing) |                                       |
| Storage Temperature                                     | -15 – 70 °C  |                                       |

| PB3000S   |  | PB5000S                            |  | Maxima 3kW   |  |
|---|--|------------------------------------|--|--|--|
| 3000 VA / 2400 W  |  | 5000 VA / 4200 W                   |  | 3000 VA / 2400 W                                   |  |
| High Frequency (HF)   |  |                                    |  |  |  |
| Offline   |  |                                    |  | Online   |  |
| Pure Sine Wave  |  |                                    |  |  |  |
| 230 VAC   |  |                                    |  |  |  |
| 170 – 280 VAC (Normal) 90 – 280 VAC (Generator/Wide)            |  |                                    |  | 100 – 290 VAC                                      |  |
| 50 Hz / 60 Hz (Auto detection)                                  |  |                                    |  |  |  |
| Pure Sine Wave  |  |                                    |  |  |  |
| 230 ±10 %   |  |                                    |  |  |  |
| 50 Hz / 60 Hz ±1 Hz   |  |                                    |  |  |  |
| 93 %  |  |                                    |  |  |  |
| 1.5 HP  |  | 2.5 HP                             |  | 1.5 HP   |  |
| Deep discharge, over charged, over loading, over temperature,   |  |                                    |  |  |  |
| Normal range: 10 ms Generator/wide range: 20 ms                 |  |                                    |  | 0 ms   |  |
| 24.0 VDC ±0.6 VDC   |  | 48.0 VDC ±1.2 VDC                  |  | 24 VDC   |  |
| ≥200 Ah   |  |                                    |  |  |  |
| 0 A / 2 A / 10 A / 20 A selectable                              |  | 0 A / 2 A / 10 A / 25 A selectable |  | 40 A   |  |
| 27.4 VDC  |  | 54.8 VDC                           |  | 27.4 VDC   |  |
| 80 A  |  | 80 A                               |  | x  |  |
| 2000 W  |  | 3750 W                             |  | x  |  |
| 1600 W  |  | 3200 W                             |  | x  |  |
| 50 A  |  | 50 A                               |  | x  |  |
| 24 VDC  |  | 48 VDC                             |  | x  |  |
| 30 – 80 VDC   |  | 60 – 150 VDC                       |  | x  |  |
| 35 – 70 VDC   |  | 70 – 120 VDC                       |  | x  |  |
| 80 VDC  |  | 150 VDC                            |  | x  |  |
| LCD Display / Audible Fault Alarm                               |  |                                    |  |  |  |
| Battery and inverter mode, overload, battery replacement, fault |  |                                    |  |  |  |
| Wall Mounted  |  |                                    |  |  |  |
| 342 x 269 x 95 mm   |  | 436 x 395 x 119 mm                 |  | 830 x 400 x 190 mm                                 |  |
| 6 kg  |  | 10.5 kg                            |  | 25 kg  |  |
| 0 – 50 °C; 95 % relative humidity (Non-condensing)              |  |                                    |  | 0 – 40 °C; 95 % Relative Humidity (Non-condensing) |  |
| -15 – 60 °C   |  |                                    |  | -15 – 70 °C  |  |





## SOLLATEK'S EXPERTISE EXTENDS WORLDWIDE THROUGH LOCAL NETWORKS



**HEAD OFFICE:** SOLLATEK UK

**MANUFACTURING FACILITIES:** UK, EGYPT, THAILAND, CHINA.

**LOCAL SOLLATEK COMPANIES:** USA, MEXICO, TURKEY, EGYPT, NIGERIA, GHANA, KENYA, SOUTH AFRICA, INDIA.

**STOCKISTS & DISTRIBUTORS IN OVER 60 COUNTRIES INCLUDING:** GREECE, CYPRUS, POLAND, JORDAN, SAUDI ARABIA, ZAMBIA, MALAWI, UGANDA, TANZANIA, IVORY COAST, AUSTRALIA.

### GLOBAL AND LOCAL

Established for over 35 years in the United Kingdom, Sollatek is a manufacturer of innovative products in power control, energy saving, temperature control and solar energy.

Operating from 12 countries and a global distribution network in 60 more. Sollatek has grown to become a household name, particularly in harsh and demanding environments where reliability and affordability are essential to everyday life.

The Sollatek voltage protection product range now includes full lines of voltage switches, stabilisers, conditioners and uninterruptible power supplies (UPS). So whether the need is to control the quality or continuity of electrical supply, Sollatek is sure to have a solution.

#### SOLLATEK UK LTD.

Tel: +44 (1753) 214 500  
sales@sollatek.com  
www.sollatek.com

**Sollatek House**  
Waterside Drive,  
Langley, Slough  
SL3 6EZ, UK

**ISO9001: 2015 accredited company**

All weights and dimensions are approximate. Specifications are subject to change without prior notice. ©Sollatek (UK) Limited 2022. All Rights Reserved. SOLLATEK and the SOLLATEK device are the trade marks of the Sollatek group of companies.



PowerBack Brochure, April 2022  
S/C: 00028008  
A/I: 10910639

