



# SOLLATEK AVR3LS RANGE WITH ADVANCED DISPLAY MODULE & CONNECTIVITY

## THREE PHASE AUTOMATIC VOLTAGE REGULATOR 70 KVA TO 140 KVA

### DESCRIPTION

The Sollatek AVR3LS range is a solid-state stabiliser, micro-processor technology-controlled Voltage Regulator. At the heart of the unit is an advanced microcomputer that not only ensures very accurate control of output voltage to the load but also provides a host of advanced features.

The AVR L-Series output voltage accuracy is 3% or better exceeding the most demanding advanced utilities minimum standards around the world. This range can cope with the harshest environments yet is designed to ensure it is affordable for demanding applications where cost is also an important consideration.

### SUITABLE FOR

- Satellite operators
- Infrastructure telecom companies
- Embassies worldwide for reliable electrification of their posts
- Medical systems for digital imaging, scanning and x-ray equipment
- Mobile phone operators
- Offices and factories

### FEATURES

- Wide input range of +/-20%
- Output accuracy of 3% exceeds the Electricity Quality and Supply Regulations (EQS) [EN50160] of 400/230 +/-10%
- Extremely fast speed of correction (>10 times faster than mechanical/servo stabilisers)
- Solid state, no moving parts and maintenance free
- Digital Meters: Input and output voltage, output current & frequency
- USB-B interface for efficient downloading of historical data
- DSP Class II surge protection
- Wide input frequency tolerance allows the unit to function properly in areas of severe voltage disturbances.
- Output circuit breaker protects the load from a short circuit or overload.
- High overload capability with up to 150% for 4 minutes
- Very low losses and minimal heat dissipation due to an efficiency of over 98% at full load



Actual unit may differ from shown



### ADM (Advanced Display Module)

- 7" high-resolution touchscreen for intuitive operation
- Real-time and historical performance data visualization
- Monitors input/output voltages, output current, and temperatures
- Dual connectivity: Ethernet and Wi-Fi for flexible integration
- Supports Modbus TCP for industrial automation systems
- Supports SNMP for network monitoring and management
- Comprehensive event logging accessible via LAN, USB, or on-screen
- Integrated web portal for local network monitoring and control
- Quick on-site setup, configuration, and maintenance

- Enclosure made from Mild Steel with High Impact resistant Powder Coat Paint
- Warranty of 2 years. Sollatek provides full back up support on all its products, with local support in over twenty countries worldwide
- Optional Automatic Voltage Switcher (AVS) that will protect against very low and very high voltage.

## TECHNICAL SPECIFICATION

## VOLTAGE TABLE

INPUT		INPUT	OUTPUT
Input Voltage	230/400 V $\pm$ 20%	105	OFF
Frequency Range	45 Hz to 75 Hz	110	134
Additional Voltage THD	<0.2% at input (tested at 100% linear load)	115	140
Maximum Input THD	Can withstand <10% THD from the supply	120	145
OUTPUT		125	152
Output Accuracy	230/400 V $\pm$ 3%	130	158
Speed of Correction	750 V/s	135	163
Additional Voltage THD	<0.25% at output (tested at 100% linear load)(No PWM methods used)	140	170
Crest Factor	>1:3 permissible on load current (tested at 100% load)	145	176
Synchronisation	Output synchronised to input	150	182
Permissible Overload	1000% for 100 ms	155	188
	150% for 4 mins	160	194
	110% for 10 mins	165	200
Load Types	Designed to run lighting, motors, battery chargers, communications equipment, office equipment, SMPS, air- conditioners, compressors, industrial machines, medical equipment and others. Suitable for all domestic, commercial and industrial sites.	170	206
GENERAL		175	212
		180	218
		185	225
		190	230
		195	236
		200	232
		205	228
		210	234
		215	228
		220	234
Surge Protection	Heavy duty input and output surge arrestors to protect against extreme surges and lightning on the supply. Dual mode. 2880 Joules total. Class II, 8/20us, 80kA	225	228
Output Circuit Breaker	Output circuit breaker to protect against overload and short circuit	230	234
Digital Meters	Accurate measurement of the AC RMS I/P and O/P voltage currents in three-phase systems Accuracy: 0.5% + 1 digit	235	229
Ambient Temperature	-10°C to +55°C	240	234
Relative Humidity	>95%, non-condensing	245	229
Environmental Protection	IP21	250	234
Acoustic Noise	<45 dB (A), <65 dB with fans on	255	229
Expected Service Life	>25 years	260	234
Standards	Manufactured to comply with: ISO9001:2015, CE, EN 55022, EN 61000-4-2, EN 61000-4-3, EN 61000-4-4, EN 61000-4-5, EN 61000-4-6, EN 61000-4-11.	265	237
		270	233
		275	237
		280	241
		285	246
		290	251



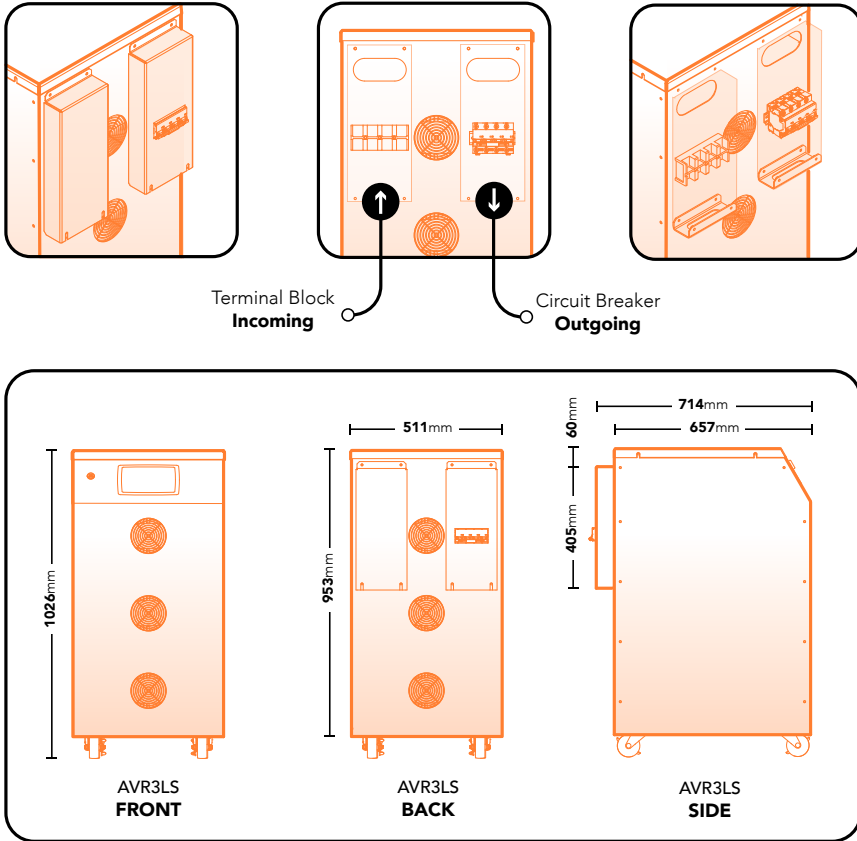
## MODEL SPECIFICATION

Part Number	Description	Output Power @ 230V	Max Output Current/Phase	Continuous Output Current*	AVR Dimension WxHxD	AVR Weight
973LS075	AVR3LS-70kVA 230/400V 3x100/75A PI	70 kVA	100 A	75 A	511 x 1026 x 714 mm	250 kg
973LS101	AVR3LS-90kVA 230/400V 3x133/100A PI	90 kVA	133 A	100 A	511 x 1026 x 714 mm	300 kg
973LS151	AVR3LS-140kVA 230/400V 3x200/150A PI	140 kVA	200 A	150 A	511 x 1226 x 764 mm	400 kg

\*Continuous Output Current on Full Load, Max Boost, 55C

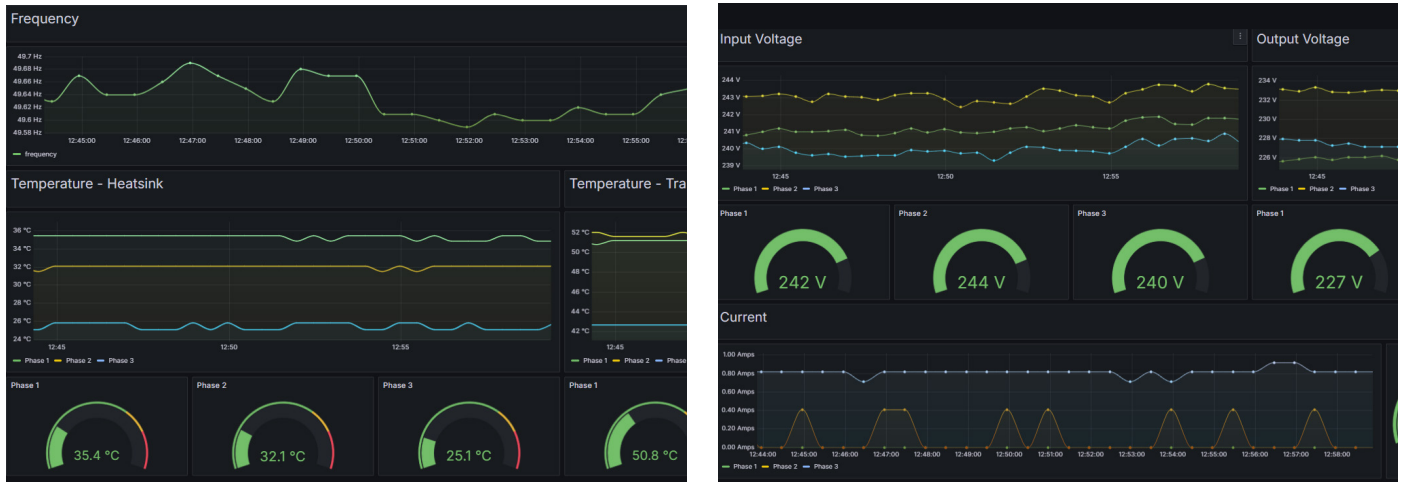


## DIMENSIONAL DIAGRAM



**i** The diagrams presented are for illustrative purposes only. Detailed drawings are available upon request.

## PORTAL PREVIEW



**i** Access is provided locally to the Portal interface, which presents critical operational data for the unit. This includes real-time readouts of key parameters such as frequency, internal temperature, voltage and current.

**SOLLATEK (UK) LIMITED**  
 Sollatek House, Waterside Drive, Langley, Slough SL3 6EZ, United Kingdom  
 Tel: +44 (1753) 214 500  
 Email: sales@sollatek.com  
 Web: www.sollatek.com

ISO9001: 2015 accredited company  
 All weights and dimensions are approximate. Specifications are subject to change without prior notice. ©Sollatek (UK) Limited 2025. All Rights Reserved. SOLLATEK and the SOLLATEK device are the trade marks of the Sollatek group of companies.

